


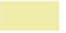













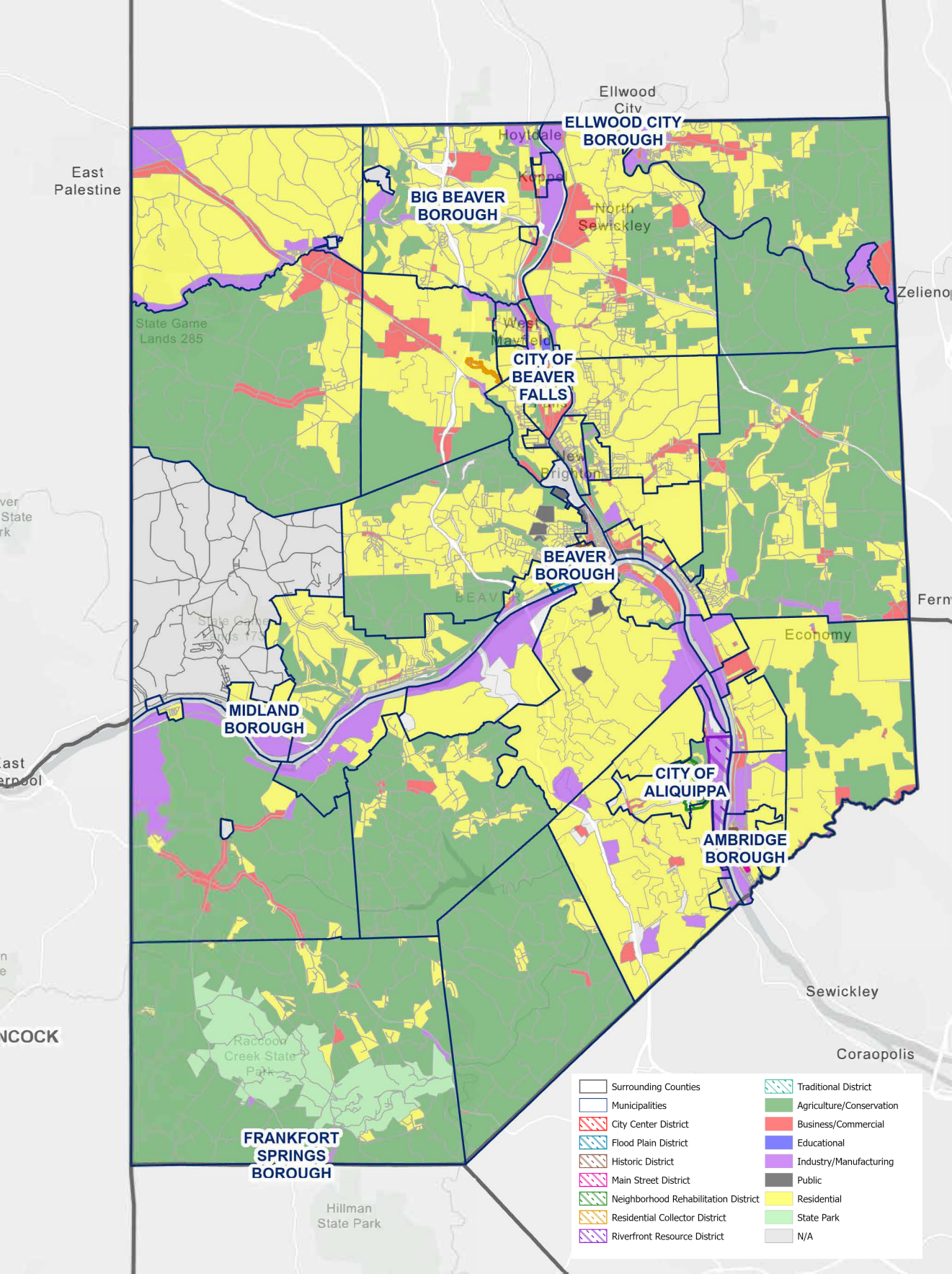


- | | | | |
|--|--|--|--|
|  Open Water |  Developed Medium Intensity |  Dwarf Scrub |  Pasture/Hay |
|  Perennial Snow/Ice |  Developed High Intensity |  Shrub/Scrub |  Cultivated Crops |
|  Developed Open Space |  Barren Land |  Grassland/Herbaceous |  Woody Wetlands |
|  Developed Low Intensity |  Deciduous Forest |  Sedge/Herbaceous |  Emergent Herbaceous Wetlands |
| |  Evergreen Forest |  Lichens | |
| |  Mixed Forest |  Moss | |



East Palestine

Ellwood City

ELLWOOD CITY BOROUGH

BIG BEAVER BOROUGH

CITY OF BEAVER FALLS

BEAVER BOROUGH

MIDLAND BOROUGH

CITY OF ALIQUIPPA

AMBRIDGE BOROUGH

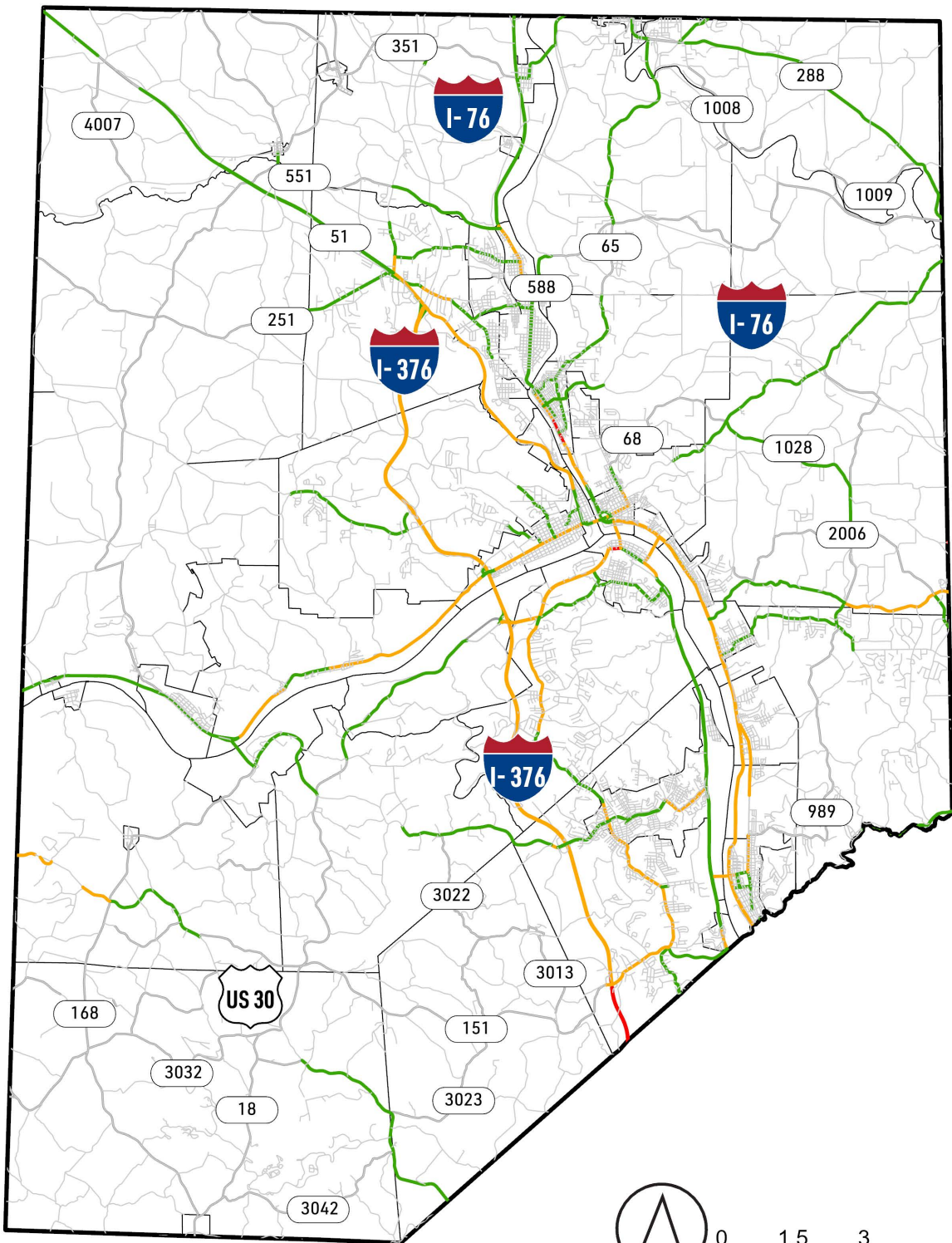
FRANKFORT SPRINGS BOROUGH

Sewickley

Coraopolis

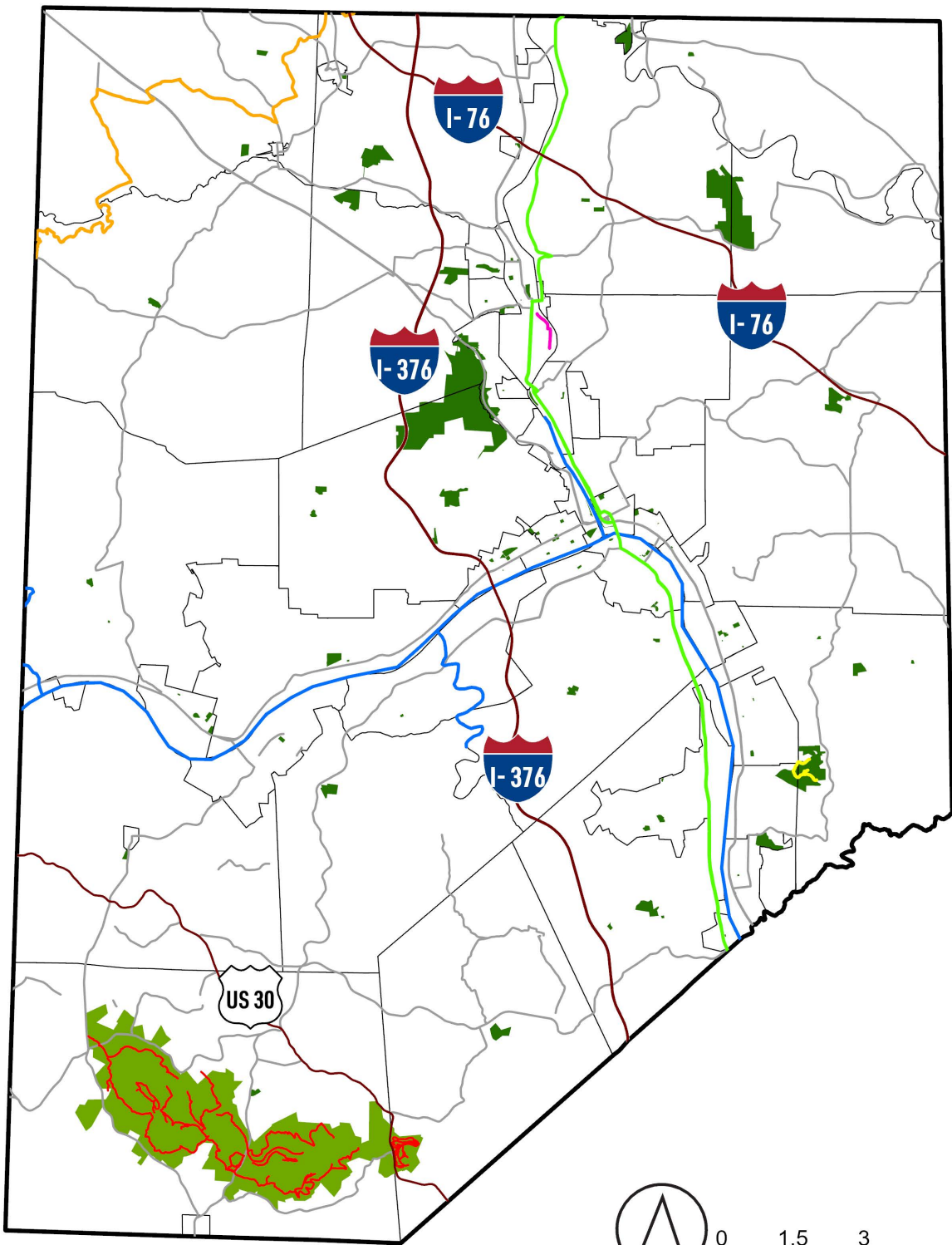
Hillman State Park

	Surrounding Counties		Traditional District
	Municipalities		Agriculture/Conservation
	City Center District		Business/Commercial
	Flood Plain District		Educational
	Historic District		Industry/Manufacturing
	Main Street District		Public
	Neighborhood Rehabilitation District		Residential
	Residential Collector District		State Park
	Riverfront Resource District		N/A







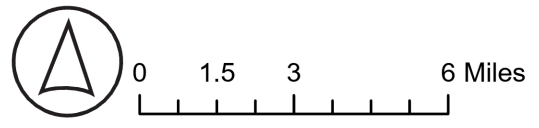
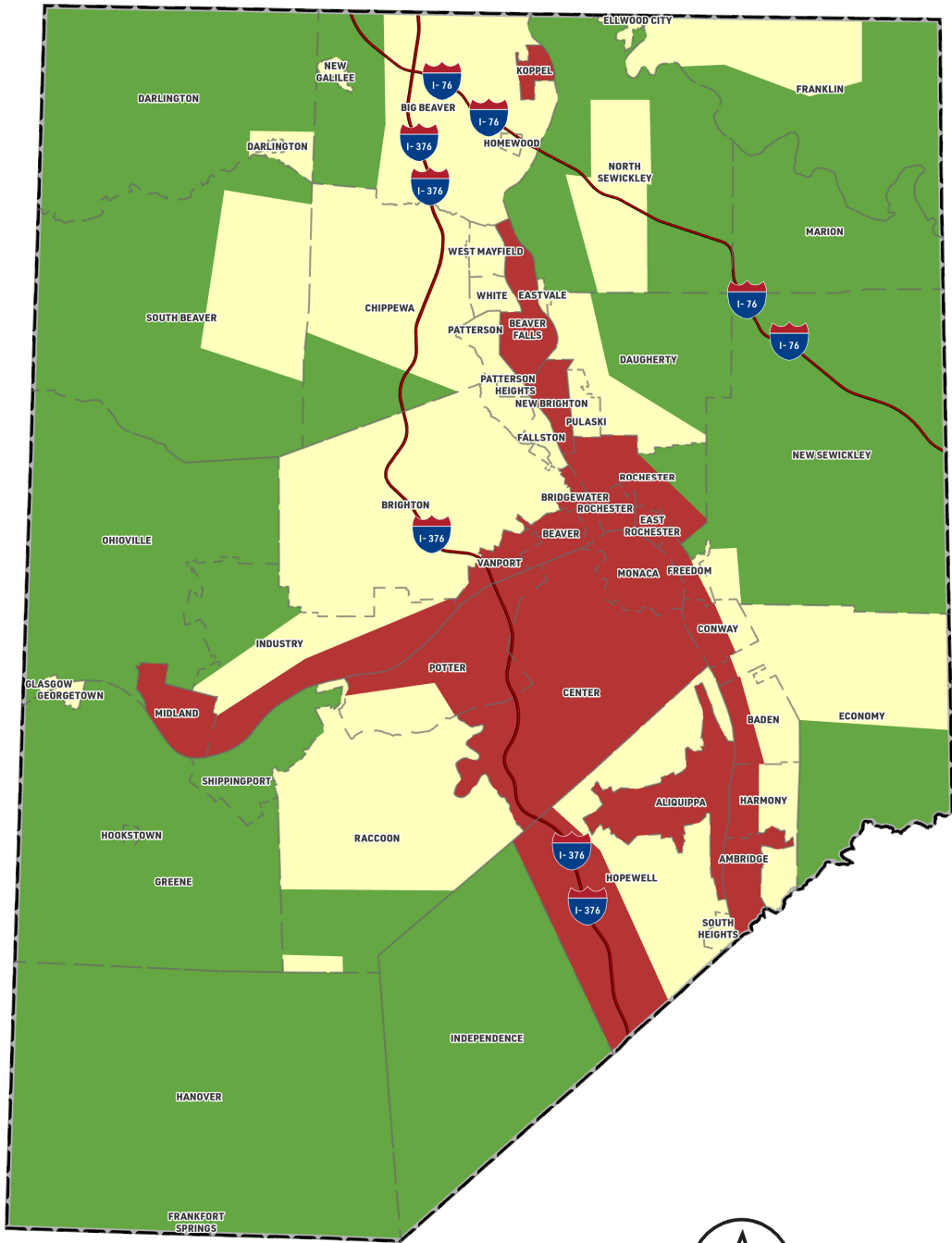
Annual Average Daily Traffic Count

- 0 - 4,000
- 4,001 - 8,000
- 8,001 - 16,000
- 16,001 - 40,000



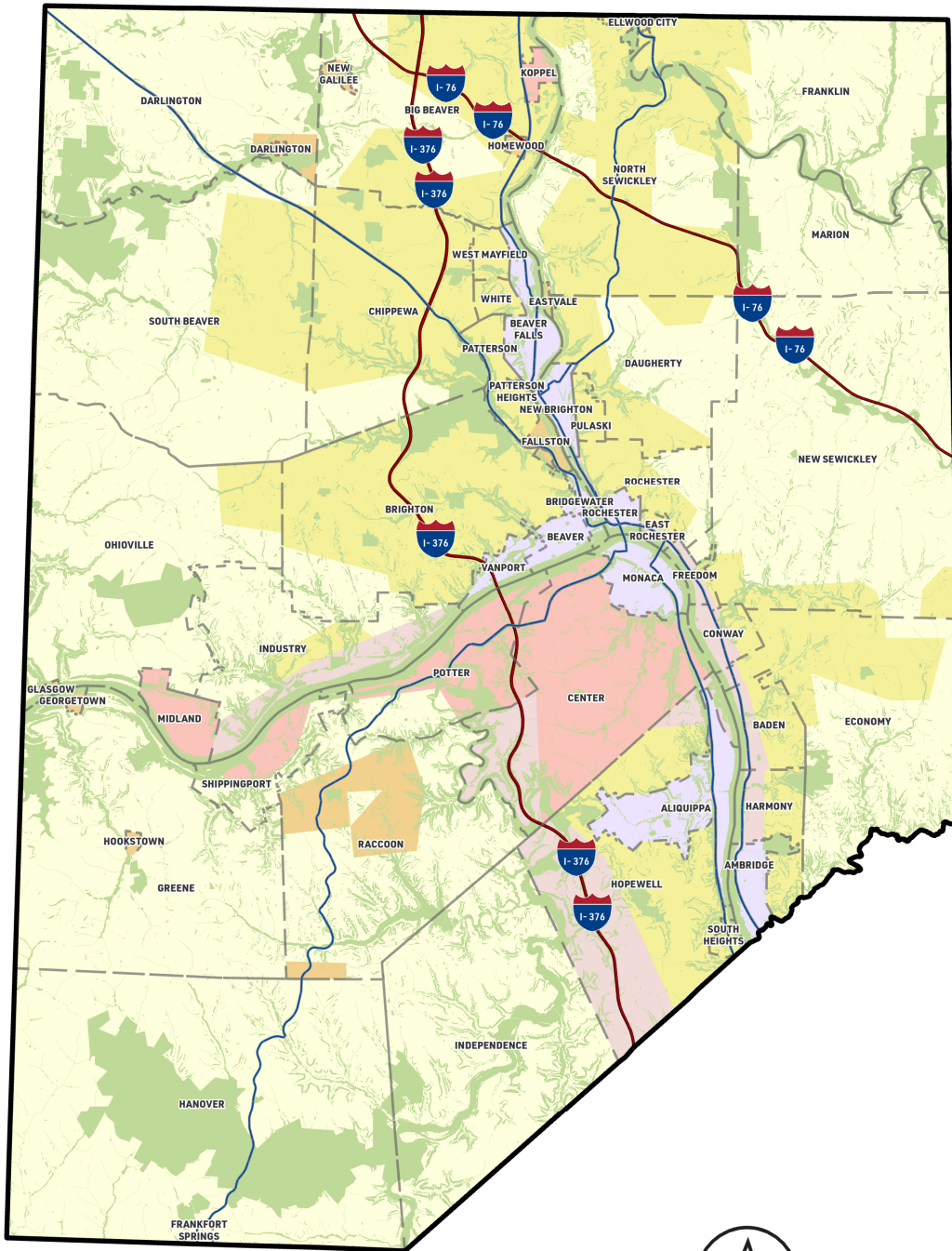
Trails

- | | | |
|--|---|--|
|  Beaver River Trail |  North Country Trail |  Local Parks |
|  BicyclePA Route A |  Ohio River Water Trail |  Raccoon Creek |
|  Legionville Trail |  Raccoon Creek State Park Trails | |



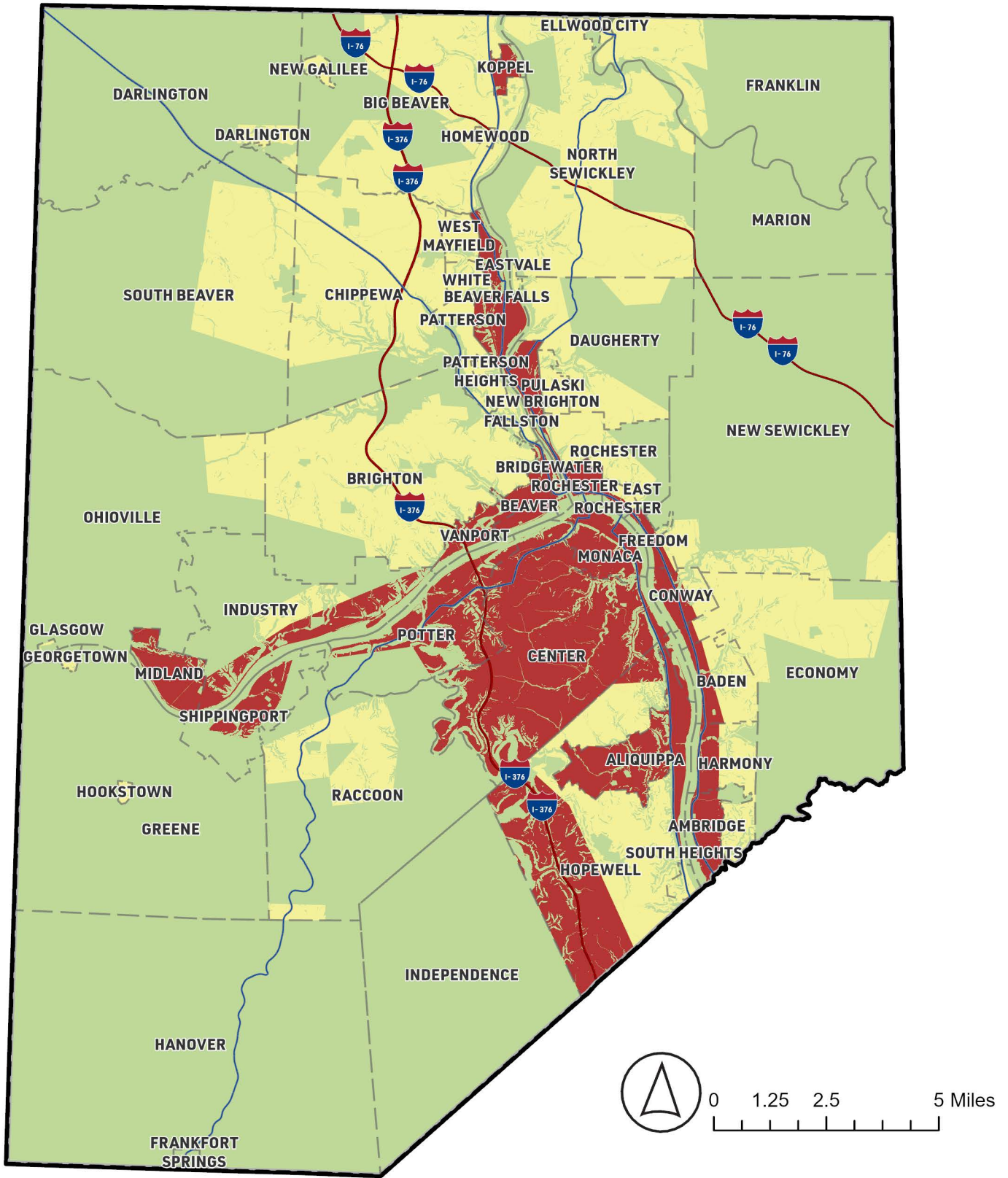
Character Area Groups

- Enhancement Area
- Growth Area
- Preservation Area



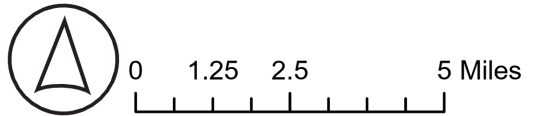
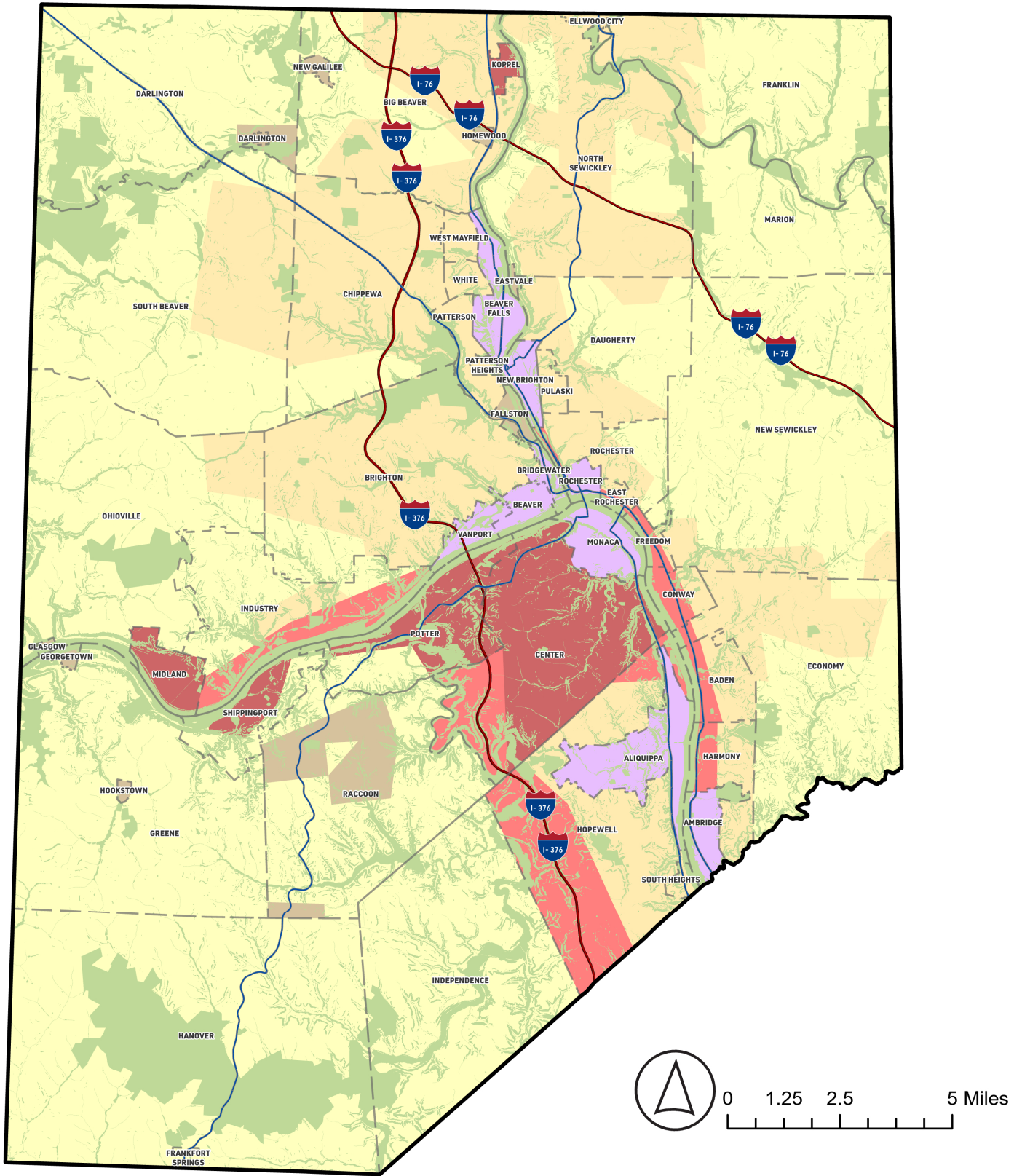
Future Character Areas

- | | |
|----------------------|---|
| Character Areas | Hamlets |
| Character Area | Residential Areas with Sewer Infrastructure |
| Commercial Corridors | Rural Residential |
| Core Communities | Conservation |
| Development Centers | |



Future Character Area Groups

- Growth Areas
- Enhancement Areas
- Preservation Areas



Future Character Areas

- Commercial Corridors
- Core Communities
- Development Centers
- Hamlets
- Residential Areas with Sewer Infrastructure
- Rural Residential
- Conservation